



Westferry Road, London, E14 3SE

£250,000

A very well kept and naturally bright double aspect chain-free apartment within walking distance from Canary Wharf financial center and steps from the River Thames.

The property boasts a bright living room, a separate modern kitchen with plenty of storage space, the double bedroom with built-in wardrobe, and a well kept bathroom with separate toilette.

Additional storage can be found in the hallway.

Flat 18 Montrose House Westferry Road, London, E14 3SE

£250,000



- Alex & Matteo Estate Agents
- Bright Double Aspect Apartment
- Modern Separate Kitchen
- Plenty of Storage Space
- Walking Distance from Financial District
- Moments from River Thames



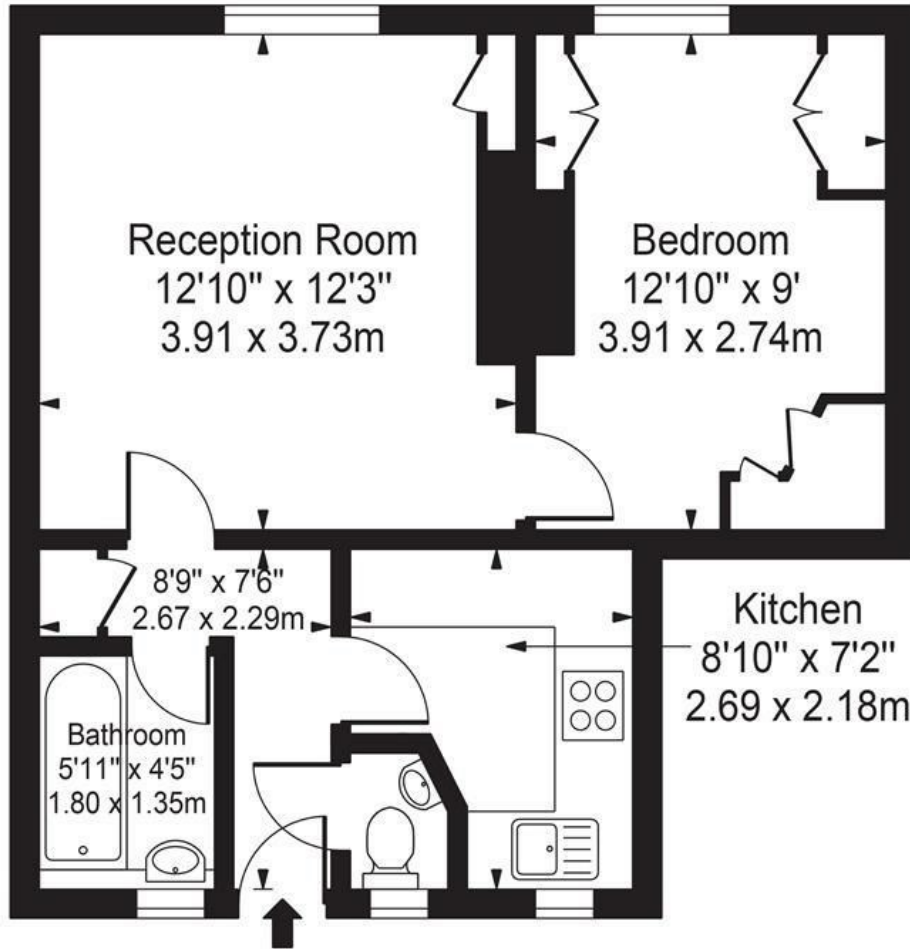
Directions

T. 0203 983 1833



Montrose House, Westferry Road


Approx. Gross Internal Area 418 Sq Ft - 38.83 Sq M 



Fourth Floor

For Illustration Purposes Only - Not To Scale

This floor plan should be used as a general outline for guidance only and does not constitute in whole or in part an offer or contract. Any intending purchaser or lessee should satisfy themselves by inspection, searches, enquiries and full survey as to the correctness of each statement. Any areas, measurements or distances quoted are approximate and should not be used to value a property or be the basis of any sale or let.

Energy Efficiency Rating		
	Current	Potential
Very energy efficient - lower running costs		
(92 plus) A		
(81-91) B		
(69-80) C		
(55-68) D	57	64
(39-54) E		
(21-38) F		
(1-20) G		
Not energy efficient - higher running costs		
England & Wales	EU Directive 2002/91/EC 	

These particulars, whilst believed to be accurate are set out as a general outline only for guidance and do not constitute any part of an offer or contract. Intending purchasers should not rely on them as statements of representation of fact, but must satisfy themselves by inspection or otherwise as to their accuracy. No person in this firm's employment has the authority to make or give any representation or warranty in respect of the property.